

# Hydraulic Servo Fatigue Tester

(Alat Uji Pembebanan Dinamis dan Uji Kelelahan)

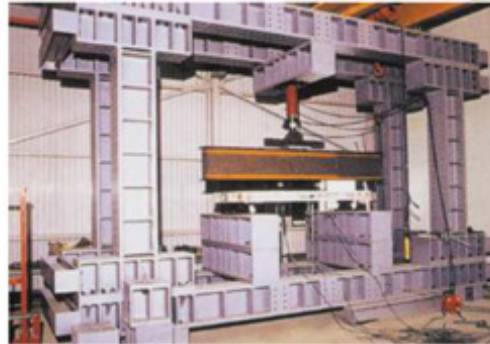
Type: SF-5F / SF-10M / SF-25M

## Dynamic Test Equipment Hydraulic Servo Actuator

### System Content



Pump Unit



Testing Frame



Hydraulic Actuator with Accumulator



Computer Controller Unit



Testing Frame for cap:  
50 kN, 100 kN, 250 kN

## Dynamic Test Equipment Hydraulic Servo Actuator

### System Overview

#### Computer System



#### Digital Servo Controller



Pump On/Off  
Solenoid On/Off  
Temperature  
Filter



Analog Output

Data Acquisition  
(Analyzer)

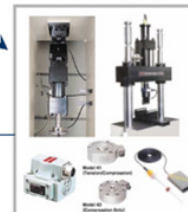


Aux & Additional  
Sensor Signals

Actuator Control  
Load Feedback  
Disp. Feedback

Servo Valve  
Hydraulic Hose

Actuator of Machine



Small, Powerful, Affordable.  
Meet the DEWE-43

DEWESoft™  
measurement innovation

# DATA ACQUISITION (ANALYZER) FOR HYDRAULIC SERVO FATIGUE TESTER

Hydraulic servo fatigue tester ini diintegrasikan dengan system akusisi data dari Dewetron – Austria, yang melakukan recording semua data pengujian dinamik dari sensor-sensor yang dipasangkan termasuk tampilan visualisasi kamera (atau dapat juga diintegrasikan dengan kamera thermal) secara langsung dan bersamaan dengan sensor-sensor lainnya. Fitur yang tak kalah menarik adalah fitur software yang powerfull, sehingga pengembangan analisis pengukuran dapat terus dikembangkan meskipun tanpa harus bersentuhan dengan bahasa pemrograman jenis tertentu.

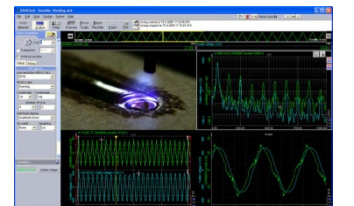
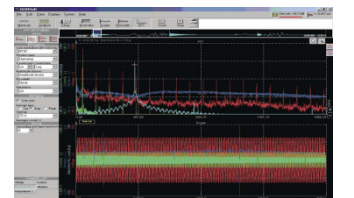
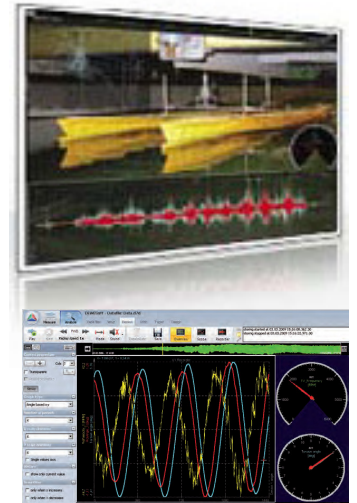
Berbagai signal dan data pengukuran, seluruhnya dapat diolah dan dieksplorasi dalam formula-formula analisis mulai dari berbagai bentuk perhitungan matematis, aritmatik, logic, Integral – differensial, statistic, hingga formulasi filter, FFT, Spectrum.

- Arithmetic
- Trigonometric
- Logic
- Signal generator
- Event functions
- d/dt, integrasi
- Statistic (rata-rata, max, min, deviasi, dll)
- Highpass-, lowpass- and bandpass-filters
- Transfer curve functions

## 8 ANALOG INPUTS

The analog inputs are able to acquire data from sensors like pedal force sensors, brake cylinder pressure, temperature of brake discs and others.

The system includes 8 simultaneous sampled 24-bit analog inputs with front-end amplifier for connecting voltage and strain sensors as well as MSI amplifiers to measure thermocouple, IEPE or other sensors.



## Distributor:

Alatperaga.com

Jl. Pahlawan Revolusi No. 22B

Jakarta 13430 – Indonesia

Telp. 021-8611444, fax. 021-8611207

Email: [sales@alatperaga.com](mailto:sales@alatperaga.com)

Web: [www.alatperaga.com](http://www.alatperaga.com)